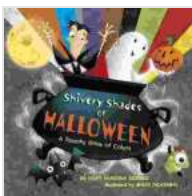


Shivery Shades of Halloween: Mary Mckenna Siddals

As the nights draw in and the air turns crisp, we find ourselves drawn to the allure of all things spooky and supernatural. And what could be more perfectly suited to the season of Halloween than the haunting and ethereal art of Mary Mckenna Siddals?

Siddals was a Pre-Raphaelite artist who lived and worked in the Victorian era. Her paintings are characterised by their rich colours, intricate details, and a sense of mystery and otherworldliness that perfectly encapsulates the spirit of Halloween.



Shivery Shades of Halloween by Mary McKenna Siddals

★★★★☆ 4.8 out of 5

Language : English

File size : 33061 KB

Text-to-Speech : Enabled

Print length : 32 pages

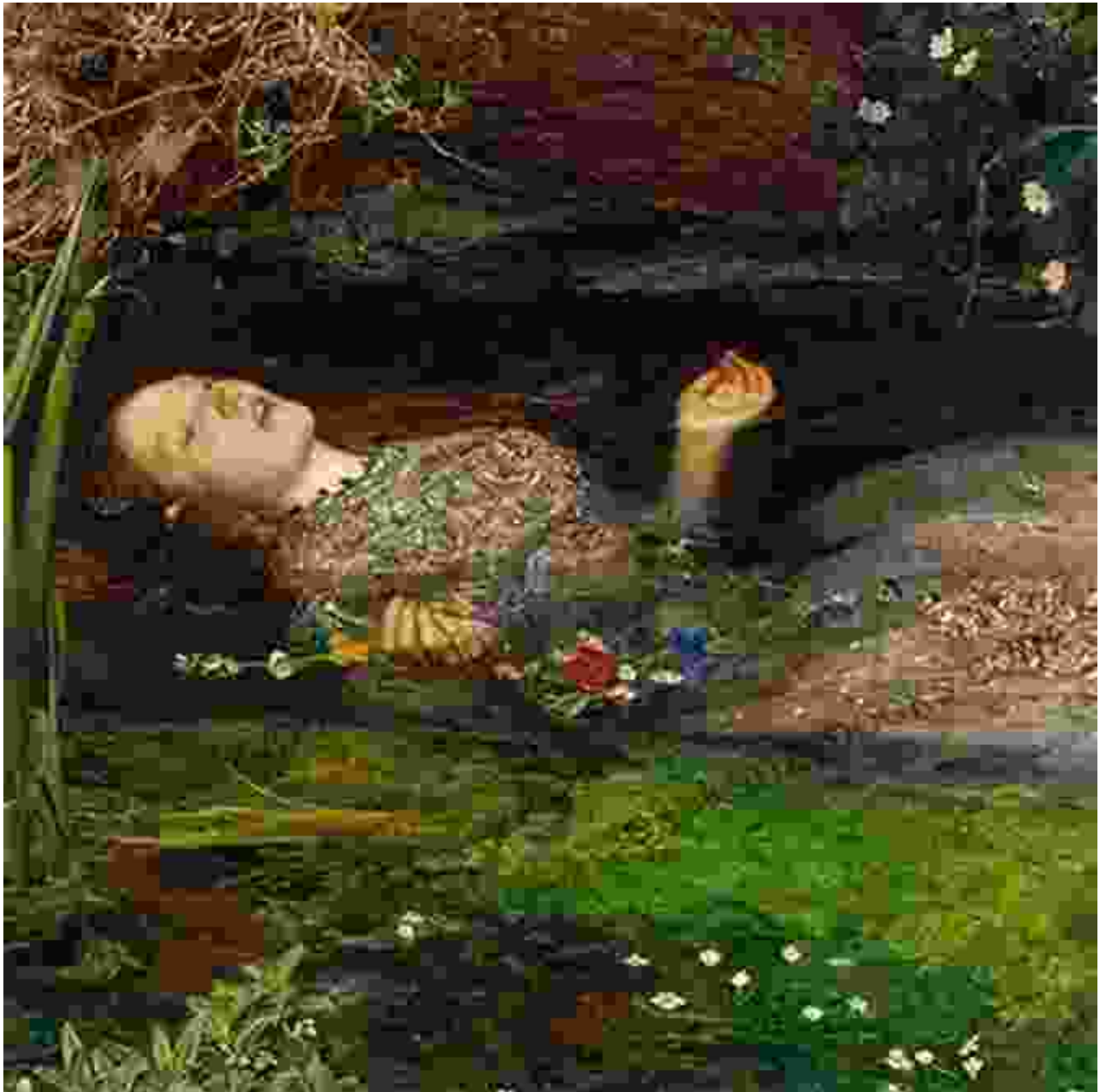
Screen Reader : Supported



A Haunting Muse

Siddals was born in London in 1829. She began her career as a milliner, but her true passion was art. In 1852, she met the Pre-Raphaelite painter Dante Gabriel Rossetti, who was immediately captivated by her beauty and talent.

Rossetti became Siddals' mentor and lover, and she quickly became one of the most important figures in the Pre-Raphaelite movement. She modelled for many of Rossetti's most famous paintings, including "Ophelia" (1852) and "The Lady of Shalott" (1853).



Siddals' own paintings are often infused with a sense of melancholy and loss. Her subjects are frequently depicted in moments of isolation or

despair, and her use of colour and light creates a haunting and atmospheric effect.



The Lady of the Lamp

One of Siddals' most famous paintings is "The Lady of the Lamp" (1854). This painting depicts a young woman standing in a dimly lit room, holding a lamp. The woman's face is obscured by the lamplight, but her eyes seem to gaze out at the viewer with a sense of longing and sadness.



The painting has been interpreted in many different ways. Some believe that it is a self-portrait of Siddals, while others believe that it is a portrait of Rossetti's wife, Elizabeth Siddal. Regardless of who the subject is, the painting perfectly captures the sense of mystery and otherworldliness that is so characteristic of Siddals' work.

A Tragic End

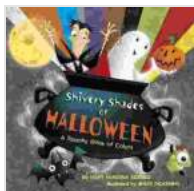
Siddals' life was cut short by tragedy. In 1860, she accidentally overdosed on laudanum, a powerful opiate. She was only 32 years old.

Siddals' death was a devastating blow to the Pre-Raphaelite movement. She was one of the most talented and influential artists of her time, and her work continues to inspire and captivate viewers today.

A Legacy of Shivery Shades

Mary Mckenna Siddals was a pioneering artist whose work perfectly captures the shivery shades of Halloween. Her paintings are haunting, ethereal, and mysterious, and they continue to inspire and fascinate viewers today.

If you are looking for a truly spooky and atmospheric way to celebrate Halloween, then I highly recommend checking out the work of Mary Mckenna Siddals. Her paintings are sure to send a shiver down your spine and leave you with a sense of wonder and awe.



Shivery Shades of Halloween by Mary McKenna Siddals

★★★★☆ 4.8 out of 5

Language : English

File size : 33061 KB

Text-to-Speech : Enabled

Print length : 32 pages

Screen Reader : Supported

FREE

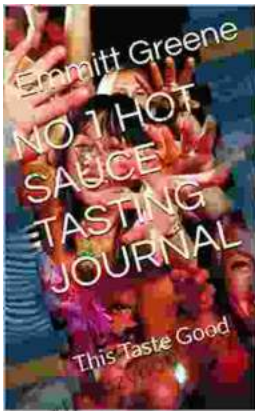
DOWNLOAD E-BOOK





Unveiling the Power of 35 Phytochemicals: Nature's Secret Weapons for Disease Prevention

1. Anthocyanins (blueberries, cherries, cranberries): Powerful antioxidants that protect against heart disease, cancer, and cognitive decline. 2. Beta-carotene (carrots,...



No Hot Sauce Tasting Journal: A Flavorful Journey for the True Connoisseur

Prepare your taste buds for an extraordinary culinary adventure with "No Hot Sauce Tasting Journal: This Taste Good." This comprehensive journal is the ultimate companion for...